

# HARDROCK<sup>®</sup> MULTI-FIX ANGLE FILLETS

Providing a smooth transition at 90° abutments



# HARDROCK® MULTI-FIX ANGLE FILLETS

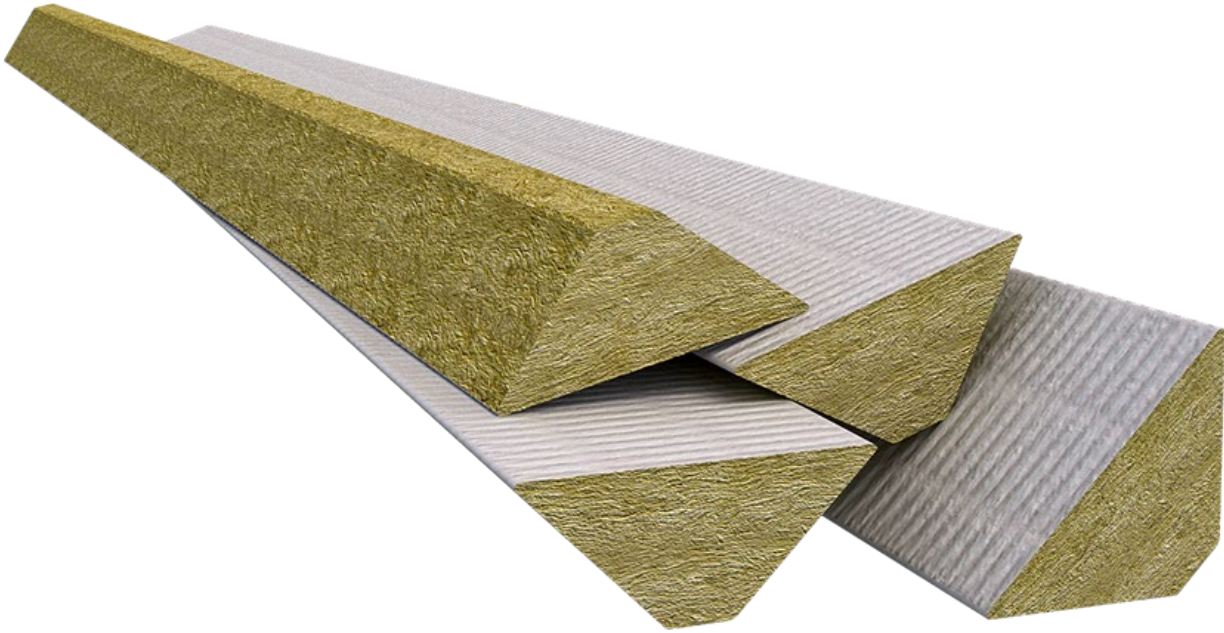
Manufactured from high density  
ROCKWOOL insulation, HARDROCK®  
Multi-Fix Angle Fillets are designed to be  
installed at 90° abutments.

Perfect for where roof insulation meets an  
upstand, Angle Fillets smooth the transition  
from horizontal to vertical while fully  
supporting the waterproof membrane.



Certificate No EMS 70301





### Advantages

- Can help to prolong the life of the waterproof membrane
- Excellent heat resistance; ideal for torch-applied bituminous systems
- Cost effective and easy to install
- Single-size solution compatible with bituminous membranes and GRP systems

### Description

HARDROCK® Multi-Fix Angle Fillet have been designed to fully support the waterproof membrane at 90° abutments, providing a smooth transition between the horizontal and vertical interface.

The product is manufactured with an integral mineral-coated glass fibre fleece, which secures a strong bond between membrane and insulation for both hot and cold applied bituminous membrane systems.

### Applications

For use with bituminous or GRP waterproofing systems in conjunction with ROCKWOOL HARDROCK® Multi-Fix flat roof insulation boards.

## Technical information

### Dimensions

Length (mm)	1200
Width (mm)	75
Thickness (mm)	30

### Handling

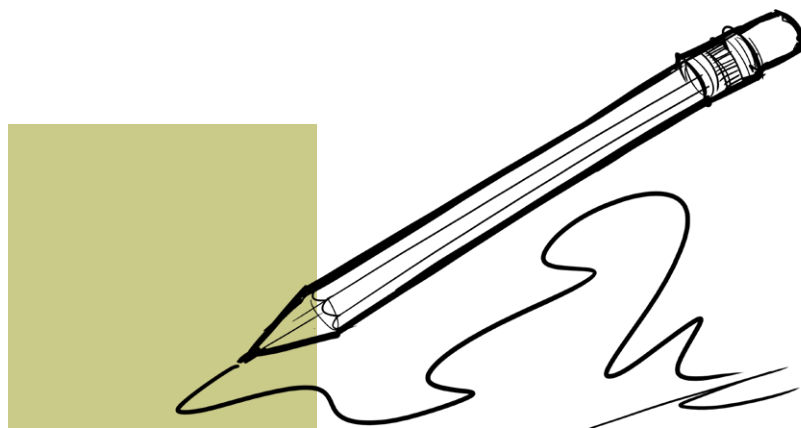
When handling Angle Fillets they should be properly supported along their length.

### Weather protection

Angle Fillets should be stored under cover. Angle Fillets that have become wet should be allowed to fully dry out naturally before use, at which point they should regain their original properties. For more information please contact Technical Solutions on 01656 868 490.

## Installation

- HARDROCK® Multi-Fix Angle Fillets must be installed in dry conditions
- With the white glass fleece facing outward, place the Angle Fillet along the 90° abutment at the interface between the horizontal and vertical surfaces
- Fix the Angle Fillet to the horizontal surface using a compatible adhesive
- Angle Fillets can be cut easily using a fine-tooth saw



## Sustainability

As an environmentally conscious company, ROCKWOOL promotes the sustainable production and use of insulation and is committed to a continuous process of environmental improvement.

All ROCKWOOL products provide outstanding thermal protection as well as four added benefits:



**Fire resistance**



**Acoustic comfort**



**Sustainable materials**



**Durability**

## Health & Safety

The safety of ROCKWOOL stone wool is confirmed by current UK and Republic of Ireland health & safety regulations and EU directive 97/69/EC: ROCKWOOL fibres are not classified as a possible human carcinogen.

A Material Safety Data Sheet is available and can be downloaded from [www.rockwool.co.uk](http://www.rockwool.co.uk) to assist in the preparation of risk assessments, as required by the Control of Substances Hazardous to Health Regulations (COSHH).

## Environment

Made from a renewable and plentiful naturally occurring resource, ROCKWOOL insulation saves fuel costs and energy in use and relies on trapped air for its thermal properties.

ROCKWOOL insulation does not contain (and has never contained) gases that have ozone depletion potential (ODP) or global warming potential (GWP).

ROCKWOOL is approximately 97% recyclable. For waste ROCKWOOL material that may be generated during installation or at end of life, we are happy to discuss the individual requirements of contractors and users considering returning these materials to our factory for recycling.



## Interested?

For further information, contact the Technical Solutions Team on 01656 868490 or email [technical.solutions@rockwool.co.uk](mailto:technical.solutions@rockwool.co.uk)  
Visit [www.rockwool.co.uk](http://www.rockwool.co.uk) to view our complete range of products and services.

*Copyright ROCKWOOL September 2018.*

### The ROCKWOOL Trademark

ROCKWOOL® - our trademark

The ROCKWOOL trademark was initially registered in Denmark as a logo mark back in 1936. In 1937, it was accompanied with a word mark registration; a registration which is now extended to more than 60 countries around the world.

The ROCKWOOL trademark is one of the largest assets in the ROCKWOOL Group, and thus well protected and defended by us throughout the world.

If you require permission to use the ROCKWOOL logo for your business, advertising or promotion. You must apply for a Trade Mark Usage Agreement. To apply, write to:  
[marketcom@rockwool.com](mailto:marketcom@rockwool.com).

### Trademarks

The following are registered trademarks of the ROCKWOOL Group:

ROCKWOOL®

ROCKCLOSE®

RAINSCREEN DUO SLAB®

HARDROCK®

ROCKFLOOR®

FLEXI®

BEAMCLAD®

FIREPRO®

### Disclaimer

ROCKWOOL Limited reserves the right to alter or amend the specification of products without notice as our policy is one of constant improvement. The information contained in this brochure is believed to be correct at the date of publication. Whilst ROCKWOOL will endeavour to keep its publications up to date, readers will appreciate that between publications there may be pertinent changes in the law, or other developments affecting the accuracy of the information contained in this brochure. The applications referred to within the brochure do not necessarily represent an exhaustive list of applications. ROCKWOOL Limited does not accept responsibility for the consequences of using ROCKWOOL in applications different from those described within this brochure. Expert advice should be sought where such different applications are contemplated, or where the extent of any listed application is in doubt.

© ROCKWOOL 2018. All rights reserved.

### Photography and Illustrations

The product illustrations are the property of ROCKWOOL Ltd and have been created for indicative purposes only.

Unless indicated below, the photography and illustrations used in this guide are the property of ROCKWOOL Limited. We reserve all rights to the usage of these images.

If you require permission to use ROCKWOOL images, you must apply for a Usage Agreement. To apply, write to:  
[marketcom@rockwool.com](mailto:marketcom@rockwool.com).

**Notes**

September 2018

**ROCKWOOL Limited**

Pencoed  
Bridgend  
CF35 6NY

Tel: 01656 862 621

[info@rockwool.co.uk](mailto:info@rockwool.co.uk)

[rockwool.co.uk](http://rockwool.co.uk)

