

ROCKPRIME®

Blown loft insulation





ROCKPRIME®

ROCKWOOL ROCKPRIME® is a blown granulate product suitable for lofts that offers a speedy alternative to roll insulation.

The product is non-combustible, achieving the highest Euroclass Rating of A1.





ROCKPRIME®
Rockwool Blown Loft Insulation

LAMBDA AT MEAN TEMPERATURE OF 10°C: 0.045 W/(mK)

R(m ² K/W)	Installed Thickness (mm)	Coverage rate (kg/m ²)	Sacks needed per 100m ²
2.0	90	1.95	9.7
2.5	115	2.40	12.1
3.0	135	2.90	14.5
3.5	160	3.35	16.9
4.0	180	3.85	19.3
4.5	205	4.35	21.7
5.5	250	5.30	26.5
6.0	270	5.80	28.9
6.5	295	6.25	31.3
7.0	315	6.75	33.8
7.5	340	7.20	36.2
8.0	360	7.70	38.6
8.5	385	8.20	41.0
9.0	405	8.65	43.4

Note: Rockwool RockPrime does not settle after installation (0% settlement to BS5803: Part 2: 1985). Nominal density of RockPrime is 21 kg/m³.

Rockprime blown loft insulation achieves an A1 classification in accordance with BS EN 13501-1 and is therefore Non-Combustible as defined in UK and Ireland building regulations.



Advantages

- Non-combustible Euroclass A1
- Quicker to install than rolls
- Ideal for new and existing lofts
- No wastage
- Does not rot or decay
- Assists in improving the acoustic performance of the ceiling
- Will not be displaced by air movement in the loft
- Does not offer sustenance to vermin

Description

ROCKWOOL ROCKPRIME® is an energy and cost-efficient blown loft granulate that is mechanically installed, offering a speedy alternative to typical loft roll insulation with minimum disruption to occupants. It is made from sustainable volcanic rock and is impervious to air movement within the loft space.

Applications

ROCKWOOL ROCKPRIME® is designed for use in between and over joists within loft spaces.

Performance

ROCKPRIME has a thermal conductivity of 0.047 W/mK.

U-values

The U-values shown in the table below are based on a loft space with joists that are 100mm in depth.

Blown thickness of ROCKPRIME (mm)	U-value (W/m ² K)
280	0.16
300	0.15
320	0.14
350	0.13
400	0.11
450	0.10

Technical information

Standards & approvals

ROCKPRIME® complies with BS EN 13162 'Thermal insulation products for buildings - Factory made mineral wool', and achieves a Kitemark (certificate number KM 33106).

Density

ROCKPRIME® blown loft Insulation has a nominal blown density of 21 kg/m³.

Product properties

ROCKPRIME® insulation achieves an A1 classification in accordance with BS EN 13501-1 and is therefore non-combustible as defined in building regulations.

ROCKPRIME® is a durable material which remains an effective insulant for the lifetime of the building.

It is a completely inert, rot-proof material and does not encourage the growth of fungi, moulds and bacteria or offer sustenance to vermin.

Unlike other types of blown loft insulation, ROCKPRIME® does not suffer from wind displacement via air movement within the loft space (BRE Report 252-159).

ROCKPRIME® insulation will not damage any metal components in the loft, nor plasticiser from PVC cables and pipes.

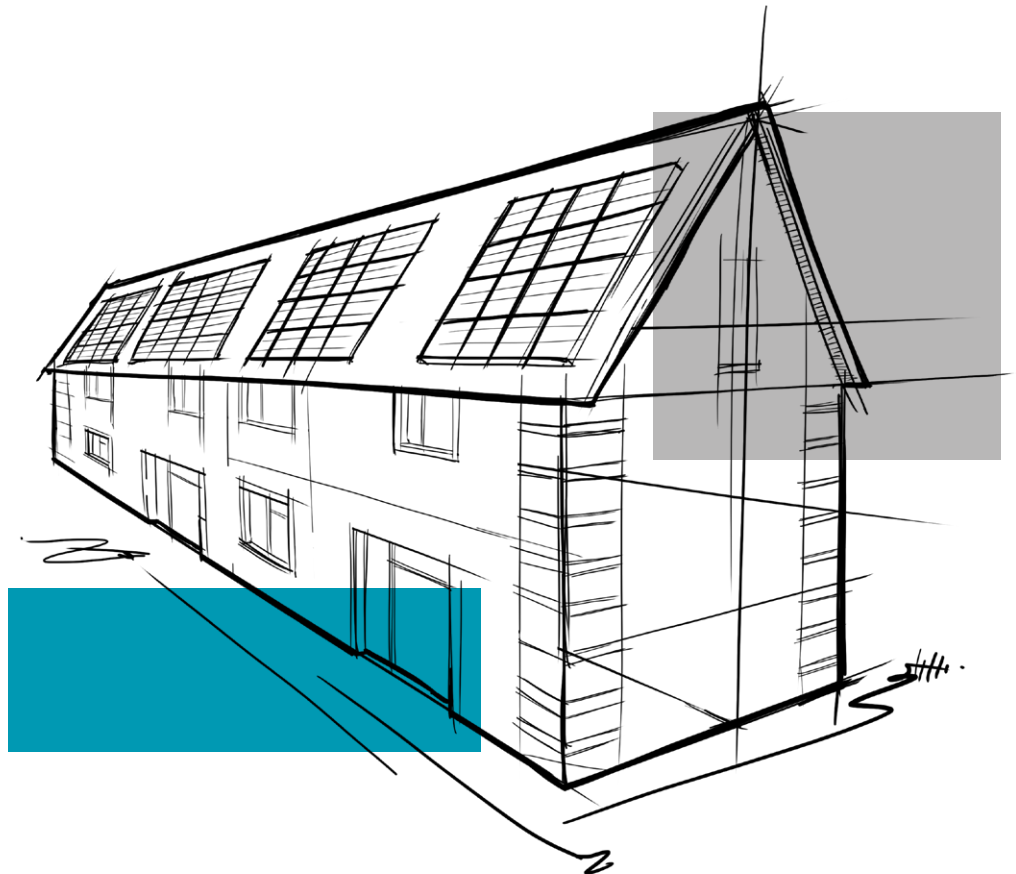
Handling

ROCKPRIME® is packaged in 20kg bags and delivered on pallets for ease of handling and storage.

Installation

ROCKPRIME® should only be installed by approved ROCKWOOL installers. Please always contact us to confirm that your supplier is qualified. Approved installers welcome this verification.

- 1. Loft hatches:** To prevent disturbance of the blown insulation when entering or leaving the loft, a ROCKWOOL 'hatch box' is fitted around the joist/trimmers as shown.
- 2. Ventilation:** To maintain cross ventilation within the loft space, it is recommended that a proprietary eaves ventilation protector is used prior to installation. Please contact your ROCKPRIME installer for further details.
- 3. Chimney breasts and flues:** Being a non-combustible product ROCKPRIME can be installed directly against chimney stacks and flues.
- 4. Electrical cables:** where possible, all cables should be lifted free of the insulation. The IEE Wiring Regulations and BS7671 208 provide guidance and correction factors to be applied in down rating cables according to their rating.



Sustainability

As an environmentally conscious company, ROCKWOOL promotes the sustainable production and use of insulation and is committed to a continuous process of environmental improvement.

All ROCKWOOL products provide outstanding thermal protection as well as four added benefits:



Fire resistance



Acoustic comfort



Sustainable materials



Durability

Environment

Made from a renewable and plentiful naturally occurring resource, ROCKWOOL insulation saves fuel costs and energy in use and relies on trapped air for its thermal properties.

ROCKWOOL insulation does not contain (and has never contained) gases that have ozone depletion potential (ODP) or global warming potential (GWP).

ROCKWOOL is approximately 97% recyclable. For waste ROCKWOOL material that may be generated during installation or at end of life, we are happy to discuss the individual requirements of contractors and users considering returning these materials to our factory for recycling.

Health & Safety

The safety of ROCKWOOL stone wool is confirmed by current UK and Republic of Ireland health & safety regulations and EU directive 97/69/EC: ROCKWOOL fibres are not classified as a possible human carcinogen.

A Material Safety Data Sheet is available and can be downloaded from www.rockwool.co.uk to assist in the preparation of risk assessments, as required by the Control of Substances Hazardous to Health Regulations (COSHH).



Interested?

For further information, contact the Technical Solutions Team on 01656 868490 or email technical.solutions@rockwool.co.uk

Visit www.rockwool.co.uk to view our complete range of products and services.

Copyright ROCKWOOL September 2018.

The ROCKWOOL Trademark

ROCKWOOL® - our trademark

The ROCKWOOL trademark was initially registered in Denmark as a logo mark back in 1936. In 1937, it was accompanied with a word mark registration; a registration which is now extended to more than 60 countries around the world.

The ROCKWOOL trademark is one of the largest assets in the ROCKWOOL Group, and thus well protected and defended by us throughout the world.

If you require permission to use the ROCKWOOL logo for your business, advertising or promotion. You must apply for a Trade Mark Usage Agreement. To apply, write to:
marketcom@rockwool.com.

Trademarks

The following are registered trademarks of the ROCKWOOL Group:

ROCKWOOL®

ROCKCLOSE®

RAINSCREEN DUO SLAB®

HARDROCK®

ROCKFLOOR®

FLEXI®

BEAMCLAD®

FIREPRO®

Disclaimer

ROCKWOOL Limited reserves the right to alter or amend the specification of products without notice as our policy is one of constant improvement. The information contained in this brochure is believed to be correct at the date of publication. Whilst ROCKWOOL will endeavour to keep its publications up to date, readers will appreciate that between publications there may be pertinent changes in the law, or other developments affecting the accuracy of the information contained in this brochure. The applications referred to within the brochure do not necessarily represent an exhaustive list of applications. ROCKWOOL Limited does not accept responsibility for the consequences of using ROCKWOOL in applications different from those described within this brochure. Expert advice should be sought where such different applications are contemplated, or where the extent of any listed application is in doubt.

© ROCKWOOL 2018. All rights reserved.

Photography and Illustrations

The product illustrations are the property of ROCKWOOL Ltd and have been created for indicative purposes only.

Unless indicated below, the photography and illustrations used in this guide are the property of ROCKWOOL Limited. We reserve all rights to the usage of these images.

If you require permission to use ROCKWOOL images, you must apply for a Usage Agreement. To apply, write to:
marketcom@rockwool.com.

September 2018

ROCKWOOL Limited

Pencoed
Bridgend
CF35 6NY

Tel: 01656 862 621

info@rockwool.co.uk

rockwool.co.uk

